



## CBV • CBI

### Features 1.Connector type 2.Welded structure

- Connector type of the "HB series" absolute pressure sensor with a welded structure
- Easy to handle and highly maintainable
- Support of a wide range of pressure media such as gas and medicinal solution
- Capable of high-accuracy vacuum region measurement without being affected by atmospheric fluctuations

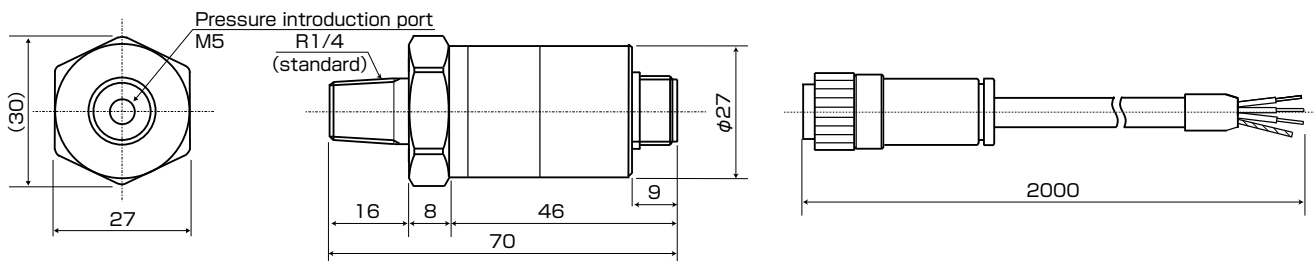


### Specifications

Model	CBV • CBI			
	-050KP	-100KP	-300KP	-600KP
Rated pressure	0 to 50kPa abs	0 to 100kPa abs	0 to 300kPa abs	0 to 600kPa abs
Pressure type	Absolute pressure			
Overpressure	CBV : 200% of the rated pressure / CBI : 150% of the rated pressure			
Wetted part material	Diaphragm : SUS316L Pressure port : SUS316			
Sealing liquid	Silicone oil			
Applicable media	Gas and fluid (media not damaging the wetted part material)			
Power supply	12 to 28VDC			
Output	1 to 5VDC only	CBV : 1 to 5VDC / CBI : 4 to 20mADC		
Current consumption	CBV : 6mA or less			
Load resistance	CBV : 1k Ω or more / CBI : 600 Ω or less (at power of 24 VDC)			
Responsiveness	5msec or less			
Accuracy (linearity)	± 0.5% F.S. or less * 1 (± 0.3% F.S. or less)			
Temperature characteristics	± 0.05% F.S. / °C or less (0 to 60°C)			
Compensated temperature range	0 to 60°C			
Operating temperature range (Measurement medium temperature)	- 20 to 80°C (no freezing allowed) - 20 to 100°C (no freezing allowed)			
Operating humidity range	35 to 85% RH (no dew condensation allowed)			
Pressure connection port	R1/4 (standard) · R3/8 · R1/2 · G1/4 · G3/8			
Cable	φ 6 vinyl (with connector) : 2000mm (standard) Shield cable			
Structure	IP66			
Insulation resistance	100M Ω or more / 500VDC			
Withstand voltage	500VAC, 1 minute			
Vibration resistance	98.1m / s <sup>2</sup> , 2 hours (X, Y, and Z directions)			
Weight	Approx 260g			
Impact of mounting orientation (port orientation changed from downward to sideways)	+ 0.3% F.S.	+ 0.1% F.S.		

\* 1. We also manufacture high-accuracy pressure sensors (accuracy: ± 0.25% F.S. or less).

### Dimensions (Units : mm)



### Cables / wires

	CBV	CBI
Red	Power supply +	Power supply +
White	Output	Power supply -
Black	Common	—

### Model

<b>C</b>	<b>B</b>	<b>I</b>	<b>-</b>	<b>1</b>	<b>0</b>	<b>0</b>	<b>K</b>	<b>P</b>	<b>-</b>	<b>0</b>	<b>2</b>	<b>-</b>	<b>R</b>	<b>3</b>
Type	Output mode	Pressure range	Unit of pressure	Cable length	Pressure connection port									
V : Voltage	I : Current	KP : kPa	02 : 2m (standard)	05 : 5m	10 : 10m	Space : R1/4 (standard)								
						R3 : R3/8								
						R4 : R1/2								
						G2 : G1/4								
						G3 : G3/8								