



PXV • PXI

Features 1.Compact 2.Special shape

- Special shape with little liquid accumulation ideal for measuring the pressure of medicinal solution
- Gauge pressure sensors with a stainless steel diaphragm structure
- The wetted part is made of SUS316L that has high corrosion resistance.
- Output signal of 1 to 5 VDC or 4 to 20 mADC from a built-in amplifier circuit



Specifications

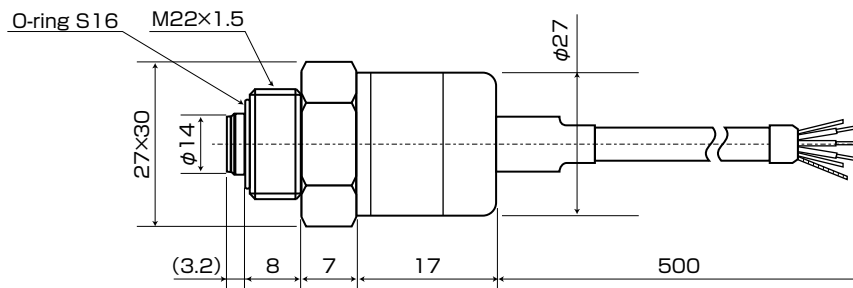
Model	PXV • PXI				
	N-100KP	-100KP	-300KP	-500KP	-001MP
Rated pressure ※ 1	0 to -100kPa	0 to 100kPa	0 to 300kPa	0 to 500kPa	0 to 1MPa
Pressure type	Gauge pressure ※ 2				
Overpressure	PXV : 200% of the rated pressure / PXI : 150% of the rated pressure				
Wetted part material	Diaphragm : SUS316L Pressure port : SUS316L O-ring : Fluororubber (standard)				
Sealing liquid	Silicone oil				
Applicable media	Gas and fluid (media not damaging the wetted part material)				
Power supply	12 to 28VDC				
Output	PXV : 1 to 5VDC / PXI : 4 to 20mADC				
Current consumption	PXV : 6mA or less				
Load resistance	PXV : 1k Ω or more / PXI : 600 Ω or less (at power of 24 VDC)				
Responsiveness	5msec or less				
Accuracy (linearity)	± 0.5% F.S. or less ※ 3 (± 0.3% F.S. or less)				
Temperature characteristics	± 0.05% F.S. / °C or less (0 to 60°C)				
Compensated temperature range	0 to 60°C				
Operating temperature range	- 10 to 80°C (no freezing allowed)				
Operating humidity range	35 to 85% RH (no dew condensation allowed)				
Pressure connection port	M22 (pitch 1.5)				
Cable	φ 6 vinyl : 500mm / 2000mm (standard) Shield cable + atmospheric relief pipe				
Structure	IP65				
Insulation resistance	100M Ω or more / 500VDC				
Withstand voltage	500VAC, 1 minute				
Vibration resistance	98.1m / s ² , 2 hours (X, Y, and Z directions)				
Weight	Approx 170g				
Impact of mounting orientation (port orientation changed from downward to sideways)	+ 0.1% F.S.	+ 0.1% F.S.			

※ 1.We also manufacture compound pressure sensors (gauge pressure of 500 kPa or less).

※ 2.Make sure that the operating vacuum pressure is 10 kPa abs or more. (Operating temperature range: 0 - 60°C)

※ 3.We also manufacture high-accuracy pressure sensors (accuracy: ± 0.25% F.S. or less).

Dimensions (Units : mm)



Cables / wires

	PXV	PXI
Red	Power supply +	Power supply +
White	Output	Power supply -
Black	Common	—
Atmospheric relief pipe	Yes	Yes

Model

P X I C - 1 0 0 K P - 0 2 - V

Type Output mode Special Pressure range Unit of pressure Cable length O-ring
V : Voltage **Space** : Positive pressure **KP** : kPa **Space** : 0.5m **V** : Fluororubber
I : Current **N** : Negative pressure **MP** : MPa **02** : 2m **N** : NBR
C : Compound pressure **05** : 5m **X** : Other
10 : 10m